



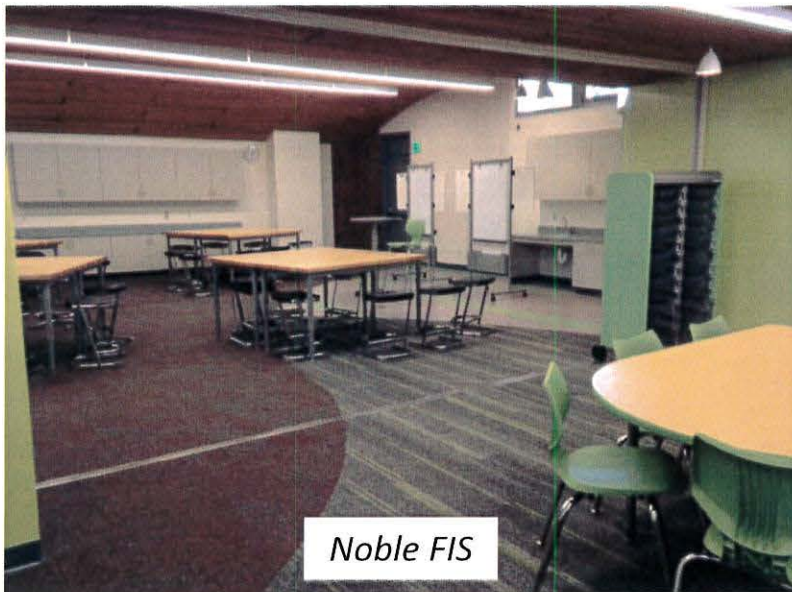
MEASURE L BOND

CONSTRUCTION UPDATE

December 6, 2016

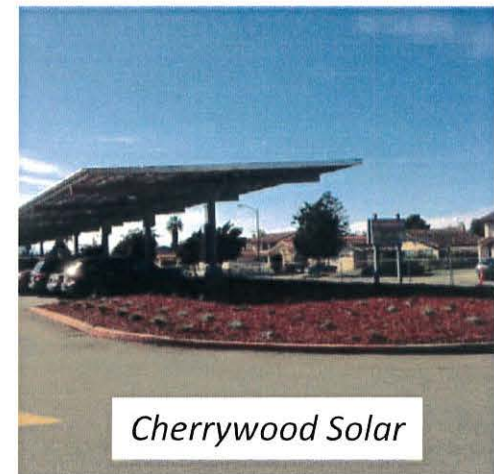
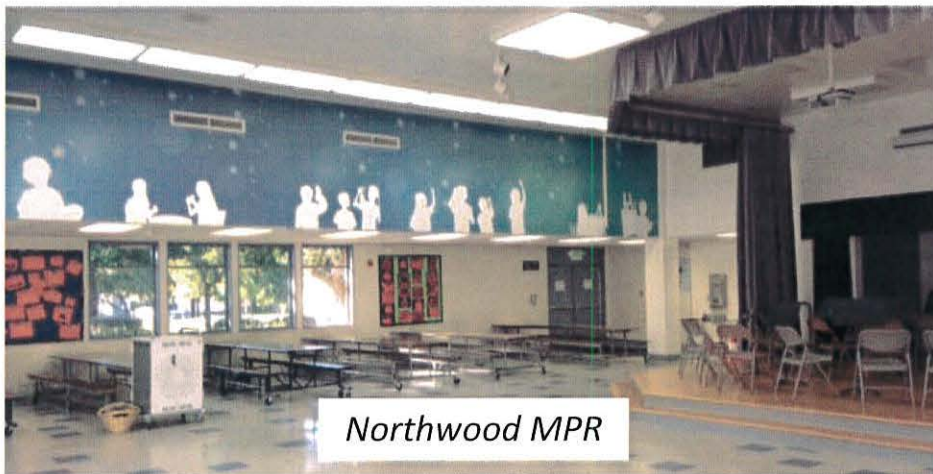
Introduction

The following presentation is intended to provide the Board of Trustees with an update on the progress of Measure L Construction Bond Projects. These are projects that are currently active throughout the District.



Measure L – 2016 Project Overview

- Phase 2 Technology Upgrade – Cable
- Remaining Work by School
- Energy Conservation – Solar
- Central Kitchen – On Schedule



Measure L – 2016 Project Details

➤ Phase II Technology Upgrade - Cabling

a. Stage I Cabling Upgrades:

- FIS Cabling – completed
- Exterior Wireless Access Points:
 - Majestic Way, Noble, Northwood, Piedmont, Summerdale, Toyon - completed
- Laneview:

✓ Buildings B, D & portables to be completed Feb. & Apr. 2017 breaks

b. Stage II Cabling Upgrades:

- MOT awarded – Completed

c. Stage III Cabling Upgrades:

- Noble awarded – Winter Break



Measure L – Remaining Work by School

1. Noble ES:

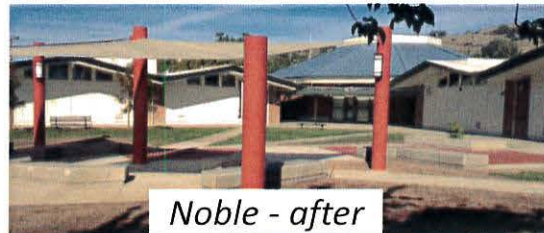
- FIS Furniture – Chairs on backorder
- Stage curtain replacement: **Completed**
- Front gate replacement: **Completed**
- Specialty doors : 12/9/16
- Punch list items: 12/9/16
- FIS & MPR Audio Visual: 12/2/16

2. Northwood ES:

- Wood ceiling & lighting - **Completed**
- Specialty partition wall: **Completed**
- Façade backing: **Completed**
- Punch list items: 12/9/16
- FIS Furniture – Chairs on backorder
- FIS & MPR Audio Visual: 12/16/16



Noble - before



Noble - after

3. Sierramont MS:

- Specialty partition walls: **Completed**
- Punch list items: **Completed**
- Parking lot gates: **Completed**
- FIS furniture – **Completed**
- FIS & MPR Audio Visual: In progress

4. Summerdale ES:

- Fence installation: 12/16/16
- Punch list items: 12/9/16
- FIS Furniture – **Completed**
- FIS & MPR Audio Visual: **Completed**

5. Vinci Park ES:

- Punch list items: **Completed**
- MPR Audio Visual: **Completed**
- Fence installation: 12/10/17

Measure L –Solar Project Update

- All 13 sites are operational and have received Permission to Operate (PTO) from PG&E
- All 13 sites secured Net Energy Metering (NEM) 1.0, which preserves project savings
- OpTerra is finalizing punch list items including monitoring, commissioning, and ADA site work
- DSA closeout process has begun. Final certification of projects should be obtained by the end of 2016
- The ribbon cutting event was picked up by at least 231 outlets online including the [Silicon Valley Business Journal](#) and the [Sacramento Bee](#)



Measure L – 2017 Project Overview

1. Stage IV Cabling Upgrades

- Brooktree, Northwood, Ruskin, Vinci Park – awarded – Summer 2017

2. Central Kitchen – expected completion April 2017

3. Pavement Rehabilitation

- Brooktree, Cherrywood, Majestic Way
- Piedmont Drop-Off Area

4. Future Project Presentations

- Laneview – FIS/Modernization
- Majestic Way – FIS/Modernization
- Piedmont – Modernization
- Ruskin - Modernization



Central Kitchen

2017 Construction & Furniture Projects

Construction Legend



Furniture Legend

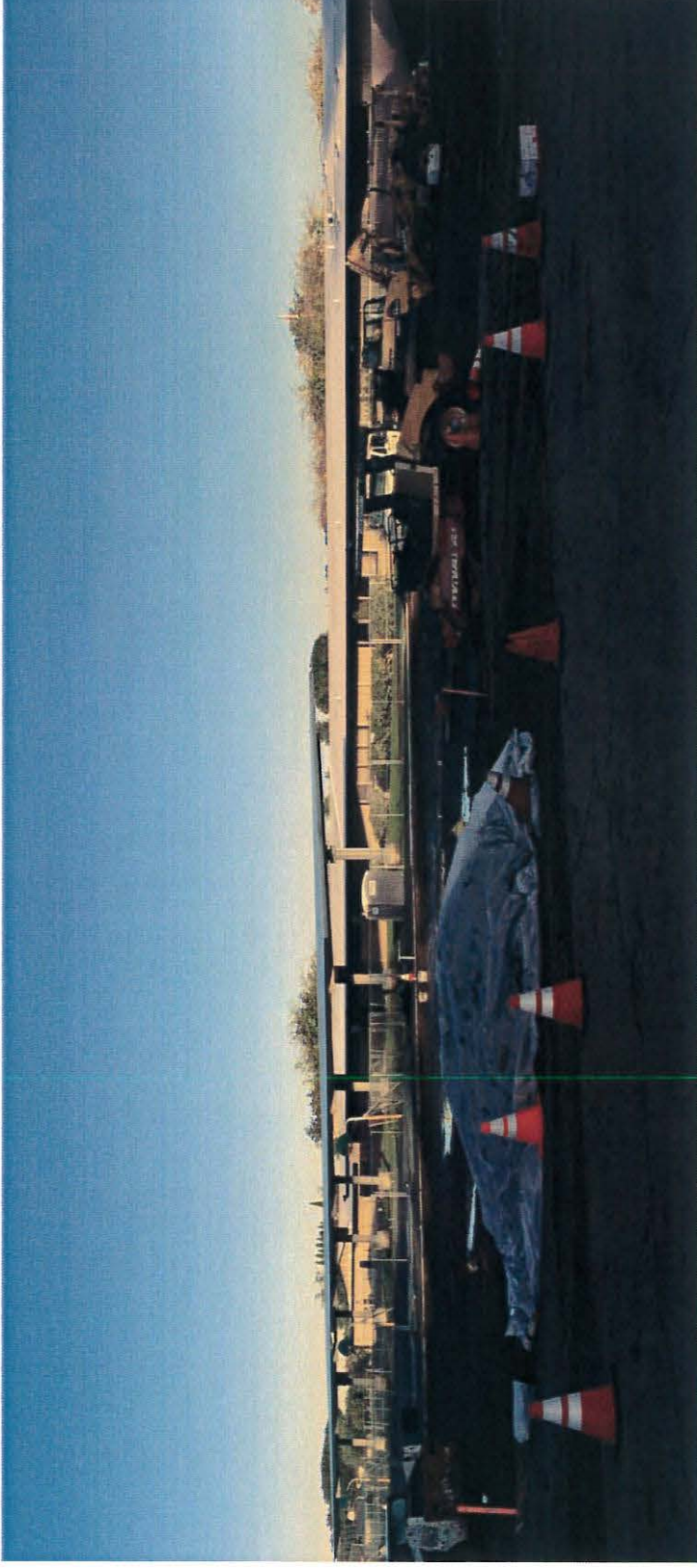


2017 Construction Projects

[illegible]

2017 Furniture Projects

[illegible]



Thank You